

International Association of Wood Anatomists (IAWA)

IAWA LIST OF MICROSCOPIC FEATURES FOR SOFTWOOD IDENTIFICATION

by an IAWA Committee

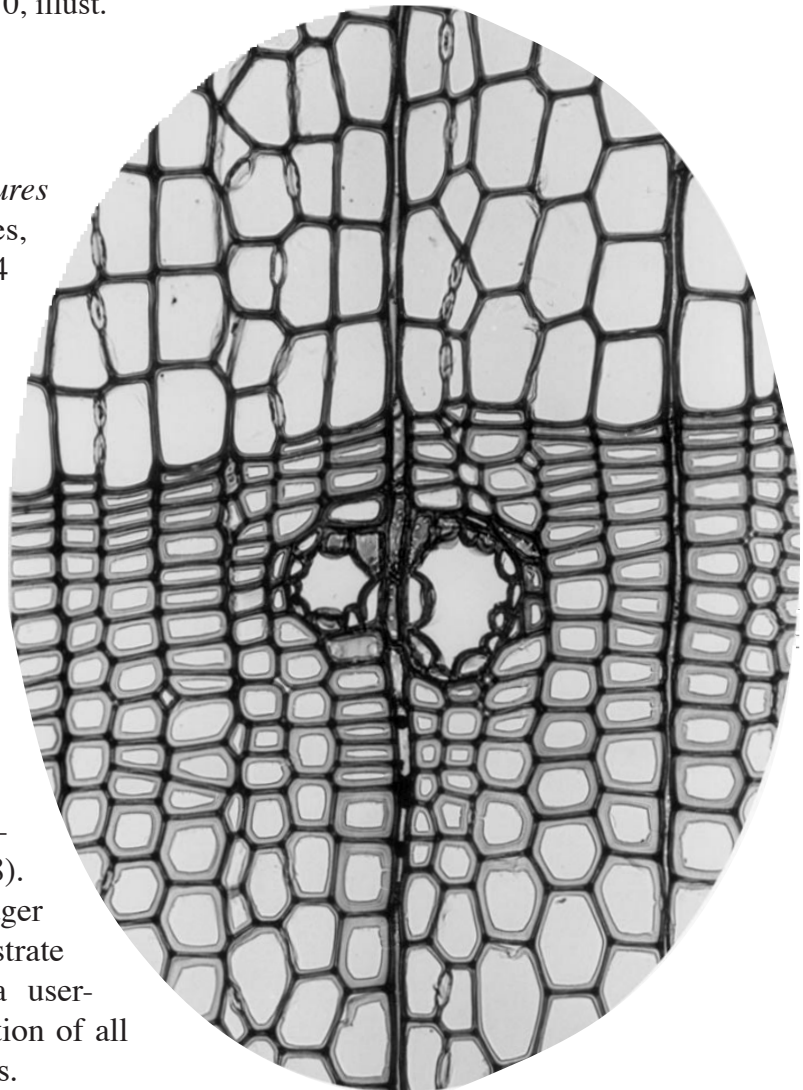
edited by H.G. Richter, D. Grosser, I. Heinz and P.E. Gasson

Published for the IAWA by the
National Herbarium of the Netherlands

Reprinted from IAWA Journal 25: 1–70, illust.
February 2004

Price EUR 25.00 or USD 30.00 *)

The *IAWA List for microscopic features for softwood identification* enumerates, defines, illustrates and annotates 124 characters that are relevant for the microscopic description and identification of the secondary xylem of trees and shrubs belonging to the Pinopsida (conifers) and Ginkgoopsida. It is the long-awaited companion of the highly successful *IAWA List of microscopic features for hardwood identification* published in 1989 and now a much-used manual for teaching hardwood identification all over the world. The Softwood list is a worthy successor of E.W.J. Philips's *Identification of Softwoods* manual (1948). The exquisite micrographs by Dieter Grosser (Munich) beautifully illustrate each feature and make the list a user-friendly introduction to the recognition of all subtle microscopic softwood features.



The numerical coding adopted make the list also suitable to model databases and interactive, computer-assisted identification keys on. Above all the Softwood List will be a useful tool for training students in the arts of softwood identification and description.

*) Excluding postage, handling and banking costs.
30% discount when 10 or more copies are ordered simultaneously.
For the order form, please turn over



International Association of Wood Anatomists

Order Form

Please return to:

IAWA Office

c/o Nationaal Herbarium Nederland, Universiteit Leiden branch
P.O. Box 9514 – 2300 RA Leiden – The Netherlands

E-mail: eevn@euronet.nl — Fax: +31 71 5273511

Orders by e-mail or fax will be accepted

Name / Institute:

.....
.....

Address:

.....
.....

Country:

.....

would like to receive exx. of the

IAWA List of Microscopic features for Softwood identification

(eds. H.G. Richter, D. Grosser, I. Heinz & P.E. Gasson)

ad **EUR 25.00 / USD 30.00** per copy* (excluding postage plus any banking costs)

Order number to be quoted:

Preference for making the payment by:

- transfer to IAWA bank account
- transfer to IAWA postal giro account
- VISA Card — MasterCard — American Express
- cheque
 - for euro cheques, EUR 9.00 banking costs have to be charged extra
 - for dollar cheques there are no extra banking costs

Please ✓ your choice – Further information to be found on the invoice

*) 30% discount when 10 or more copies are ordered simultaneously