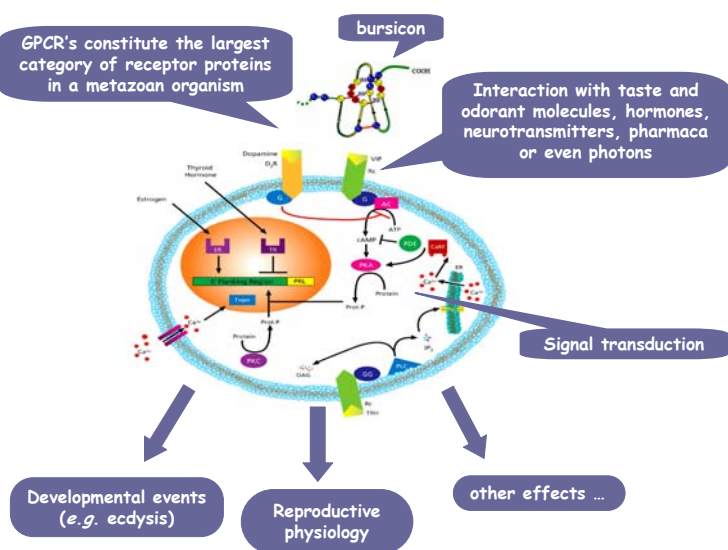


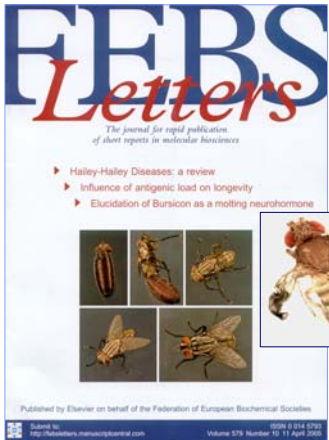
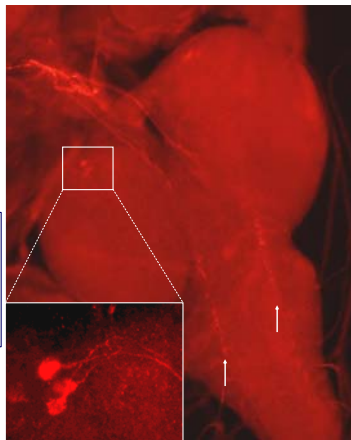
The research group investigates the physiological role and mode of action of neural and endocrine messenger molecules in developmental processes, including growth, reproduction and ageing. Together with other partners belonging to the section of 'Animal Physiology and Neurobiology', it forms a large research consortium.

Receptors and signal transduction

G protein-coupled receptors



Immunolocalization of bursicon in fly brain

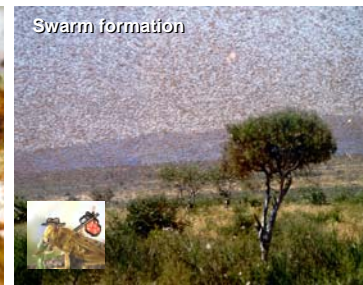


Locusts: control of reproduction and polyphenism

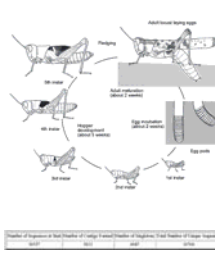
Phenotypic plasticity in the desert locust, *Schistocerca gregaria*



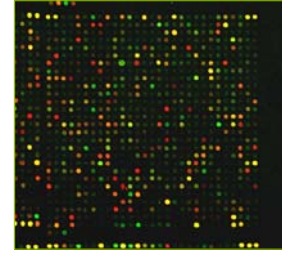
Which signaling pathways control these processes?



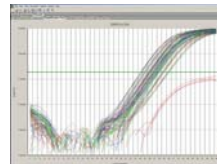
RESEARCH



EST Project



Microarrays



Real-time PCR



RNAi

Effect of inhibitor peptides of digestive proteases in pest insects



Spodoptera littoralis

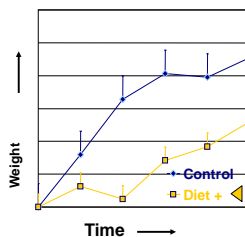


Dissection (mid)gut

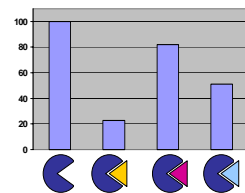


Digestive proteases

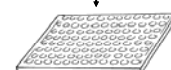
Protease inhibitors



Protease activity (%)



'Micro plate reader'



'96-well' plate

